



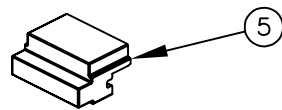
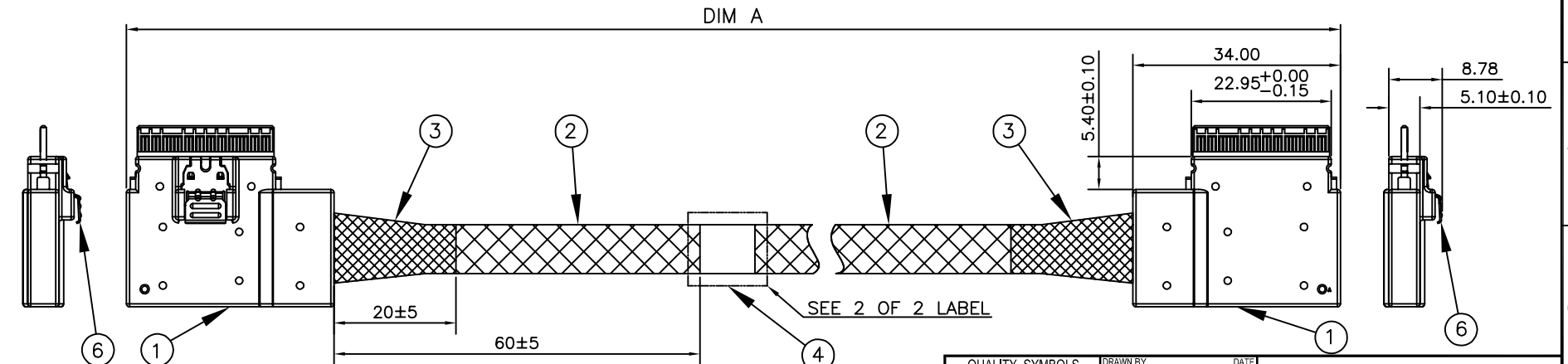
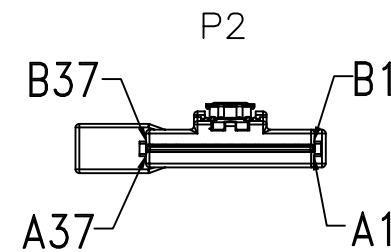
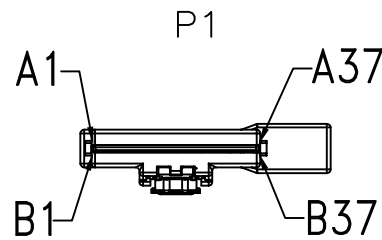
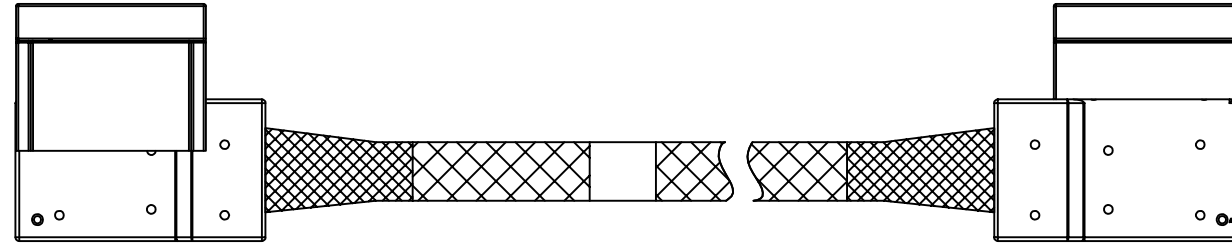
NOTES:

1. ALL CABLE 100% OPEN, SHORT, MISS WIRE & TRANSIENT FAULT TEST.
2. CONDUCTIVE RESISTANCE: 2Ω MAX.
3. INSULATION RESISTANCE: 10M Ω MIN WITH 200Vac AT 10ms.
4. HIGH FREQUENCY TEST MUST COMPLY WITH SAS 4.0 REQUIREMENT.  
CONNECTOR IMPEDANCE: 100Ω ±15Ω  
CABLE IMPEDANCE: 100Ω ±10Ω
5. ALL MATERIAL AND PROCESS MUST MEET THE REQUIREMENT OF RoHS2.0
6. PRODUCT SPEC. REFER TO PS-728XX-02XXX-XXX
7. PDR NUMBER:

100Ω 32 AWG:APD1090257

8. PART NUMBER:

728XX	-	XX	XXX	-	XXX	CUSTOMER CODE
					001:ACES	
SERIES CODE			PORT NUMBER			SERIAL NUMBER
16:8i LSE/LSE 100Ω			02:2PORT			001



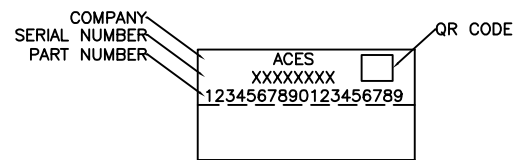
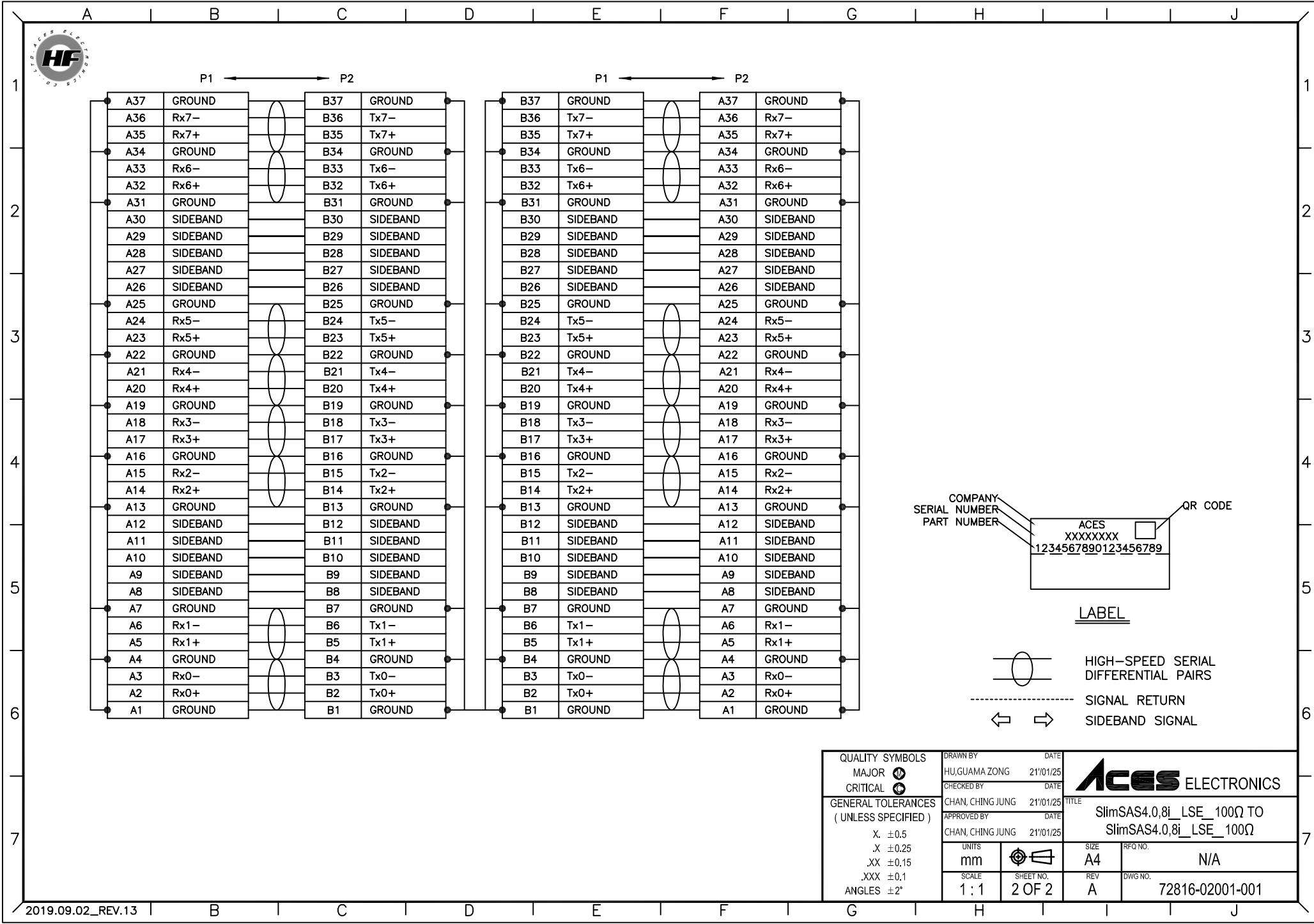
ITEM	DESCRIPTION	Q'TY	UNIT
1	Slimline 8i LEFT SIDE 100Ω & Slimline 8i LEFT SIDE OUT 100Ω.	2	PCS
2	EXPANDO TUBE.	A/R	MM
3	ACETATE TAPE COLOR: BLACK.	A/R	MM
4	LABEL.	A/R	MM
5	DUST COVER, PE, COLOR: WHITE.	2	PCS
6	LATCH.	2	PCS

QUALITY SYMBOLS	MAJOR Ⓢ	CRITICAL Ⓢ
GENERAL TOLERANCES (UNLESS SPECIFIED)	X. ±0.5	.X ±0.25
	.XX ±0.15	.XXX ±0.1
	ANGLES ±2°	

DRAWN BY	DATE
HU, GUAMA ZONG	21/01/25
CHECKED BY	DATE
CHAN, CHING JUNG	21/01/25
APPROVED BY	DATE
CHAN, CHING JUNG	21/01/25
UNITS	mm
SCALE	1:1
SHEET NO.	1 OF 2

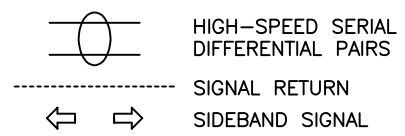
TITLE	SlimSAS4.0,8i_LSE_100Ω TO SlimSAS4.0,8i_LSE_100Ω
SIZE	A4
REFQ NO.	N/A
REV	A
DWG NO.	72816-02001-001

72816-02001-001	PART NUMBER
1000±15	DIM A



ACES  
XXXXXXXX  
1234567890123456789

LABEL



<b>QUALITY SYMBOLS</b> MAJOR Ⓢ CRITICAL Ⓢ <b>GENERAL TOLERANCES</b> ( UNLESS SPECIFIED ) X. ±0.5 .X ±0.25 .XX ±0.15 .XXX ±0.1 ANGLES ±2°	DRAWN BY HU, GUAMA ZONG	DATE 21/01/25	
	CHECKED BY CHAN, CHING JUNG	DATE 21/01/25	
	APPROVED BY CHAN, CHING JUNG	DATE 21/01/25	RFO NO. N/A
	UNITS mm		SIZE A4
	SCALE 1 : 1	SHEET NO. 2 OF 2	REV A
			DWG NO. 72816-02001-001